



BNSF LOGISTICS CENTER

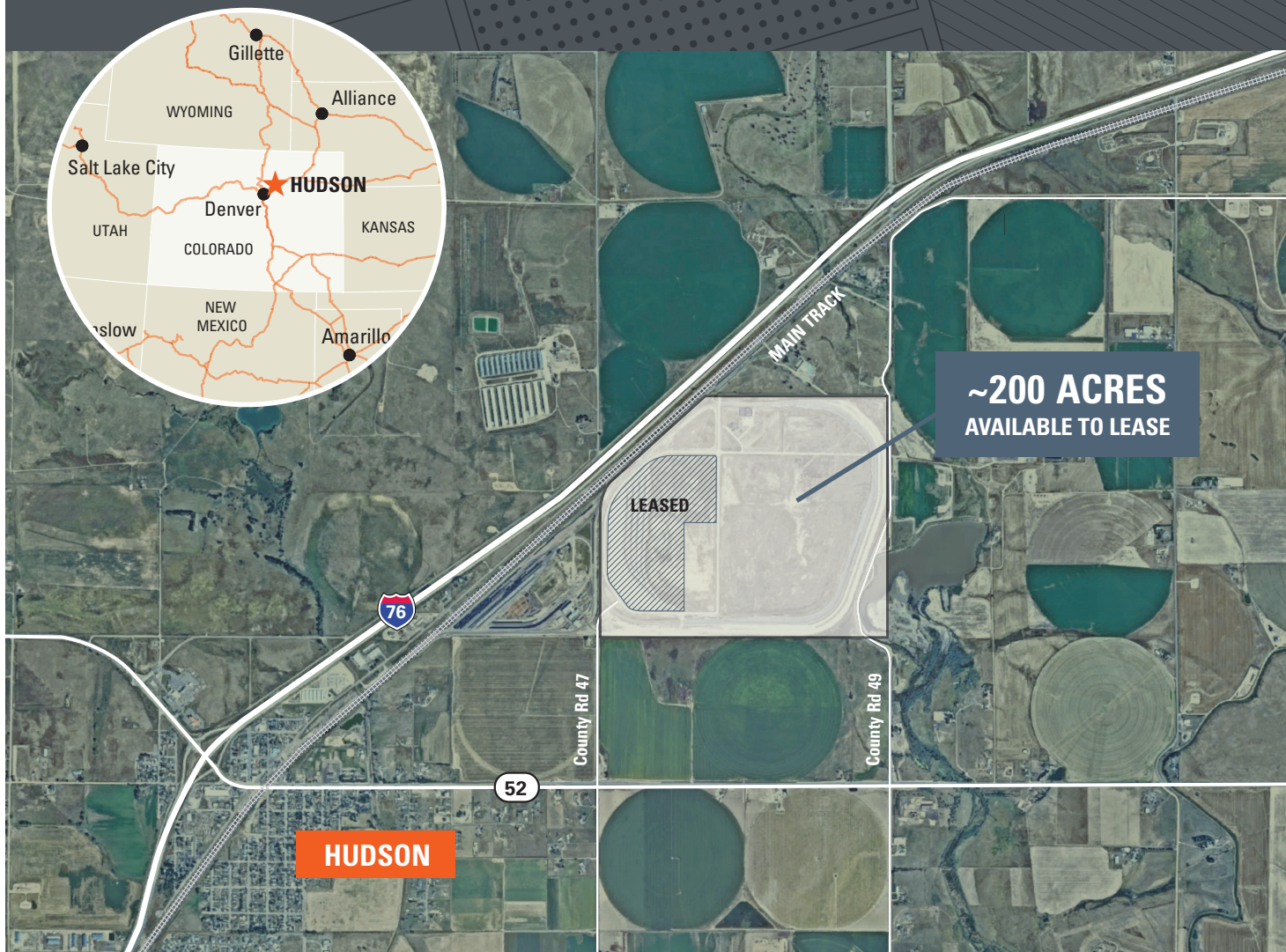
Hudson, Colorado, in the Greater Denver Area



CONNECTING YOUR BUSINESS TO NEW OPPORTUNITIES WITH OUR RAIL-SERVED FACILITY

BNSF Logistics Center Hudson will put you on the right track for growth

**SAVE 9 MONTHS OR MORE
OF DEVELOPMENT TIME!**



What are BNSF Logistics Centers?

- > BNSF-owned rail-served business parks
- > Serving multiple customers including construction, manufacturing, agricultural, energy & food industries
- > Shovel-ready, fully permitted sites with mainline connections
- > Immediate access to the BNSF network for direct rail service
- > Strategically located to access growing markets
- > Part of BNSF's Premier Parks, Sites and Transload Programs, a strategic approach that creates conditions ideal for rail development on the BNSF network

Your Ultimate Logistics Solution: BNSF Logistics Center Hudson

Experience the Advantages Today!

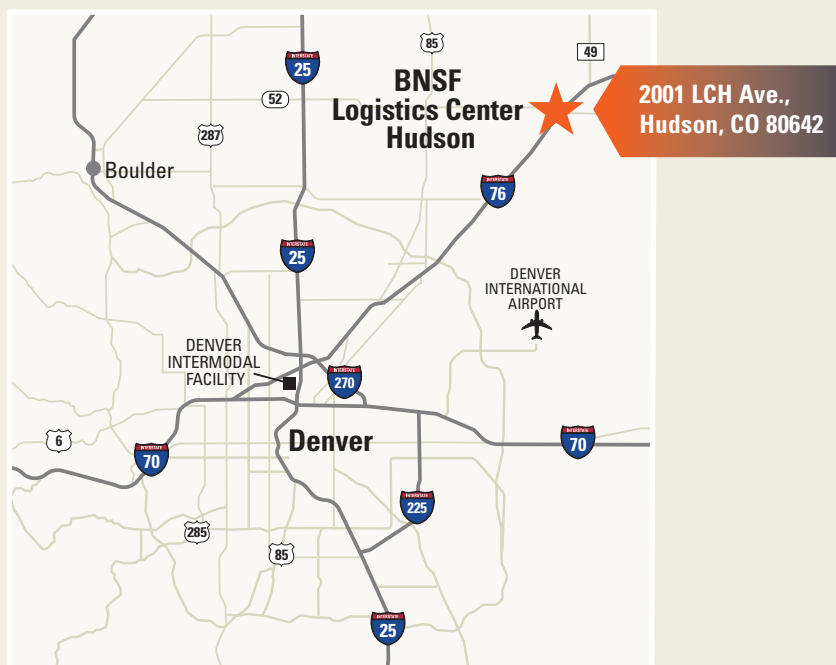


What does BNSF Logistics Center Hudson offer?



Easy Access to the Greater Denver Market

- > Connectivity to I-76 via State Highway 52
- > Positioned to serve customers in Denver & surrounding markets
- > 40 minutes from Downtown Denver
- > 30 minutes to Denver International Airport



Lots of Flexibility

- > ~200 shovel-ready acres
- > Parcel size 5+ acres, depending on customer need
- > Serving both industrial & agricultural businesses



Saving Time and Money

- > BNSF Premier Transloader on site
- > Permitted & Entitled
- > Infrastructure in place including:
 - Mainline turnouts
 - Common serving tracks
 - Water, sewer and other utility upgrades

UTILITIES

Water	Town of Hudson – 3M GPD
Gas	Atmos Energy – Natural Gas Main Extension via steel line with pressures above 100 psi and HDPE pipe with pressures up to 60 psi
Electricity	United Power 2 MW with ability to increase with improvements to infrastructure via United Power
Fiber	Allo Communications

How do you get your new facility on track?

Call 303.480.6440

Lindsay.VanMeter@BNSF.com

Visit www.bnsf.com/raildevelopment

Assistance from initial design to commencement of shipping

